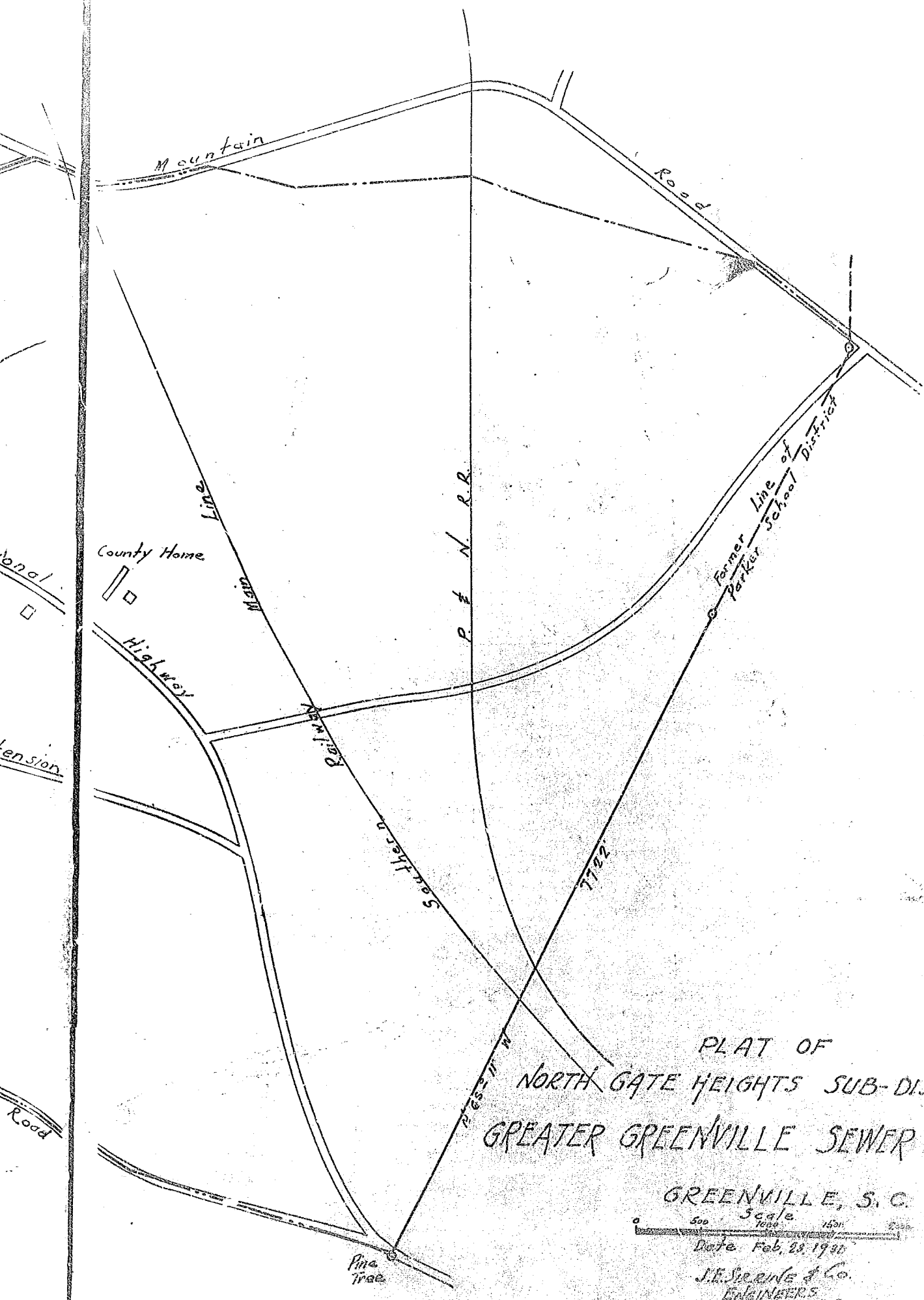




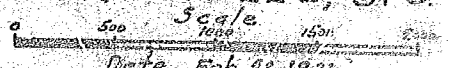
Faint, illegible text or markings at the bottom of the page, possibly bleed-through from the reverse side.

N



PLAT OF
 NORTH GATE HEIGHTS SUB-DISTRICT
 GREATER GREENVILLE SEWER DISTRICT

GREENVILLE, S. C.



Date Feb. 28, 1930

J. E. Seemle & Co.
 ENGINEERS
 GREENVILLE, S. C.

For descriptions of Plat see Deed Book 112, page 488.

Recorded in Book 112, page 488